

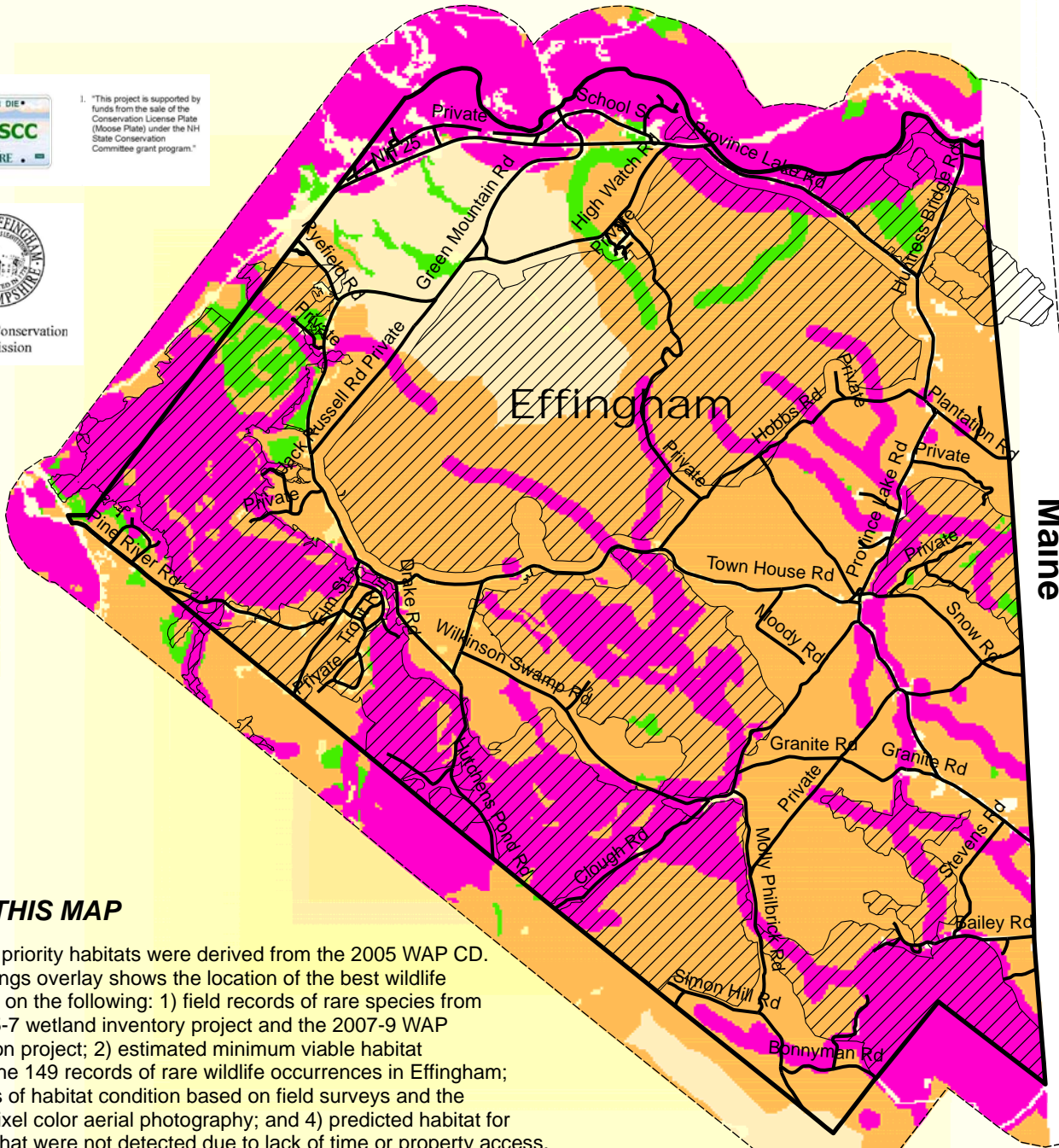
Effingham, NH WAP-derived Priority Habitats with Overlay of Field Findings



1. "This project is supported by funds from the sale of the Conservation License Plate (Moose Plate) under the NH State Conservation Committee grant program."



Effingham Conservation Commission



Maine

ABOUT THIS MAP

WAP-derived priority habitats were derived from the 2005 WAP CD. The field findings overlay shows the location of the best wildlife habitat based on the following: 1) field records of rare species from both the 2005-7 wetland inventory project and the 2007-9 WAP implementation project; 2) estimated minimum viable habitat surrounding the 149 records of rare wildlife occurrences in Effingham; 3) an analysis of habitat condition based on field surveys and the 2006, 1-foot pixel color aerial photography; and 4) predicted habitat for rare species that were not detected due to lack of time or property access.

Legend

Best Wildlife Habitat in Effingham based on Field Findings

Town Boundary

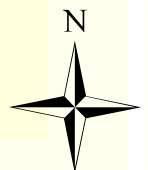
Highest Ranked Wildlife Habitat by Ecological Condition (from WAP)

Highest ranked habitat in NH (by ecological condition)

Highest ranked habitat in biological region (by ecological condition)

Supporting landscapes

Habitat not top-ranked (at statewide scale)



6250 3125 0 6250 Feet

